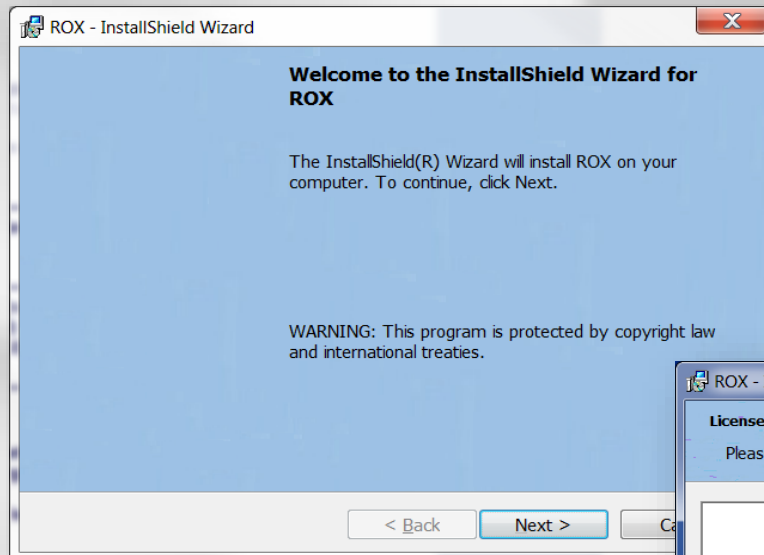


### Step 1: Installing the ROX Software

- ❖ Go to [www.LekSecurities.com](http://www.LekSecurities.com) ...► ENTER ...► CUSTOMER AREA
- ❖ Click ROX Production Install ...► Run

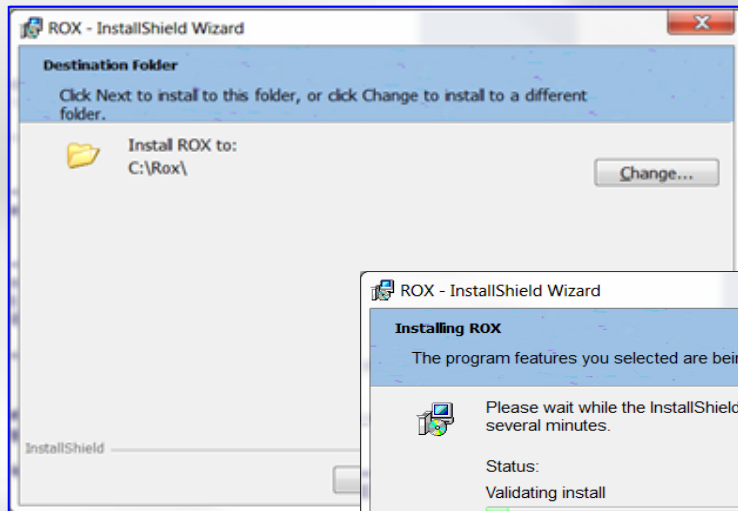
*Before getting started, make sure to have your **Trader Username**, **Password**, and **Branch***



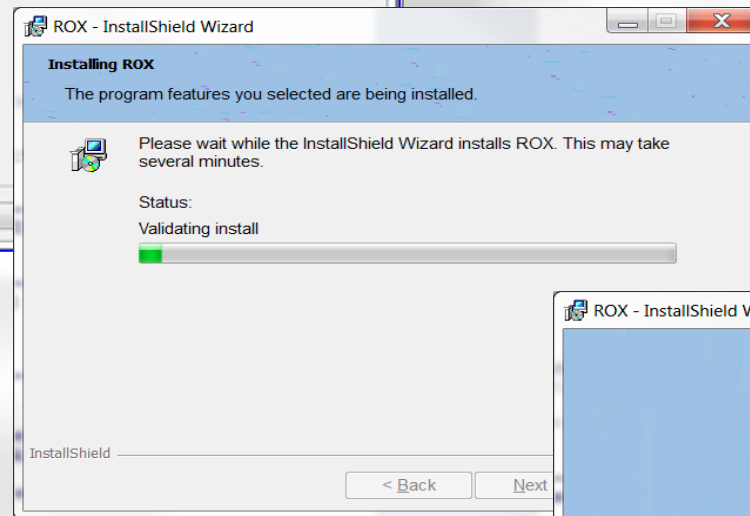
- ❖ Click 'Next' to continue the install

- ❖ Read and accept the terms and conditions, and click 'Next' to continue the install

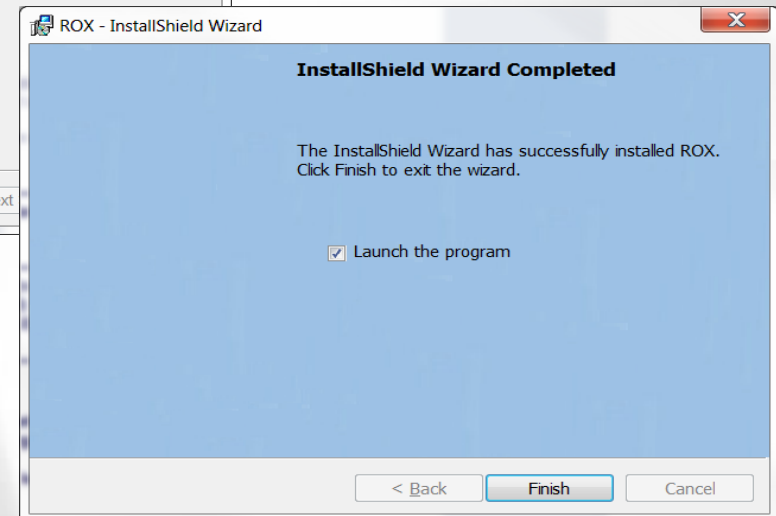




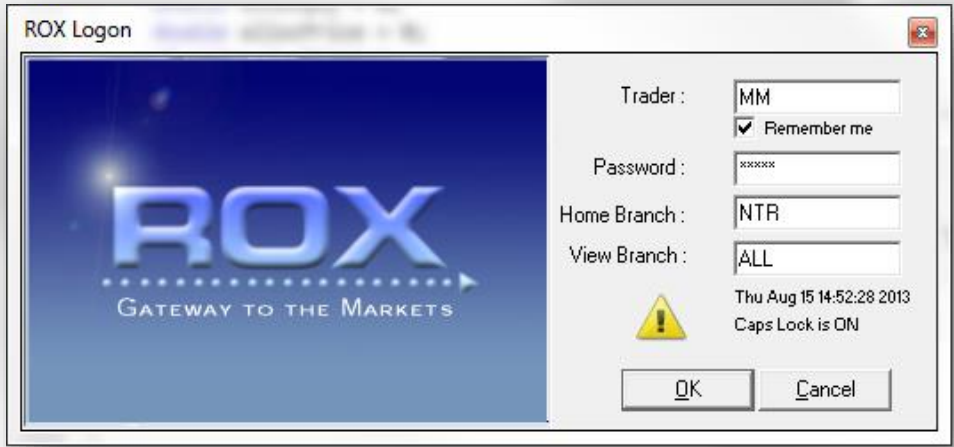
- ❖ Choose the directory to install ROX, and click 'Next' to continue



- ❖ After the install completes, click finish to launch ROX



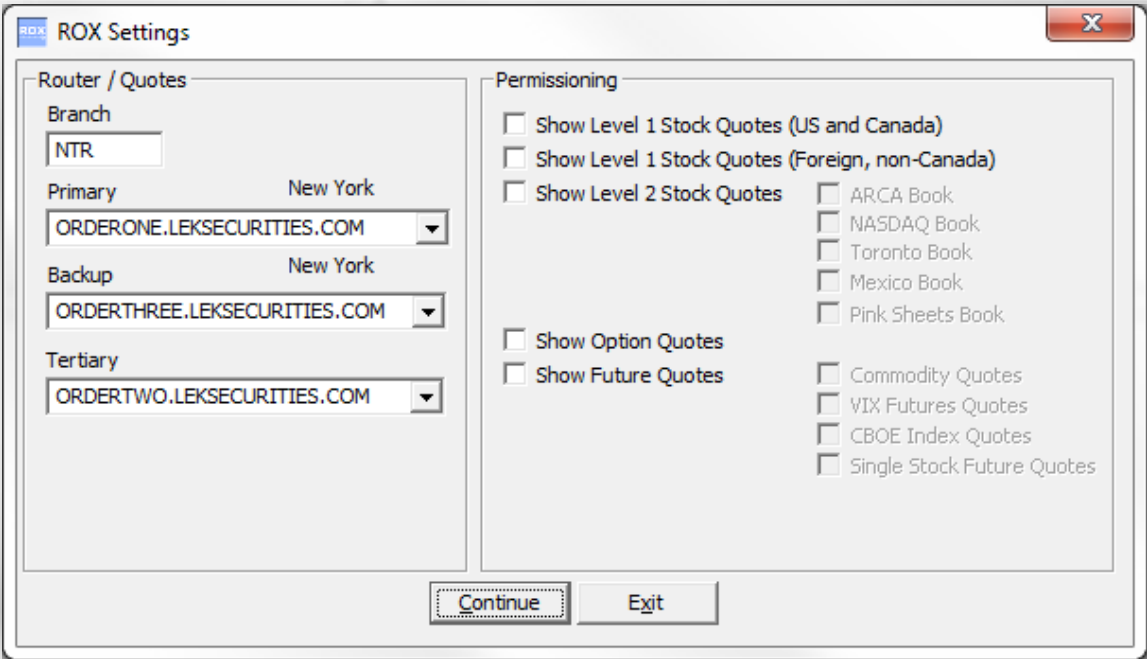
**Step 2: Signing on to ROX**



Once ROX is successfully installed, enter **Trader Username and Password** (case sensitive), **Home Branch, and View Branch**. **Home Branch and View Branch** will typically be the same.

**Step 3: Configuring ROX**

The first time you logon to ROX, you will be prompted to enter the name of the **Server Name** you will connect to, and you may subscribe to quotes if

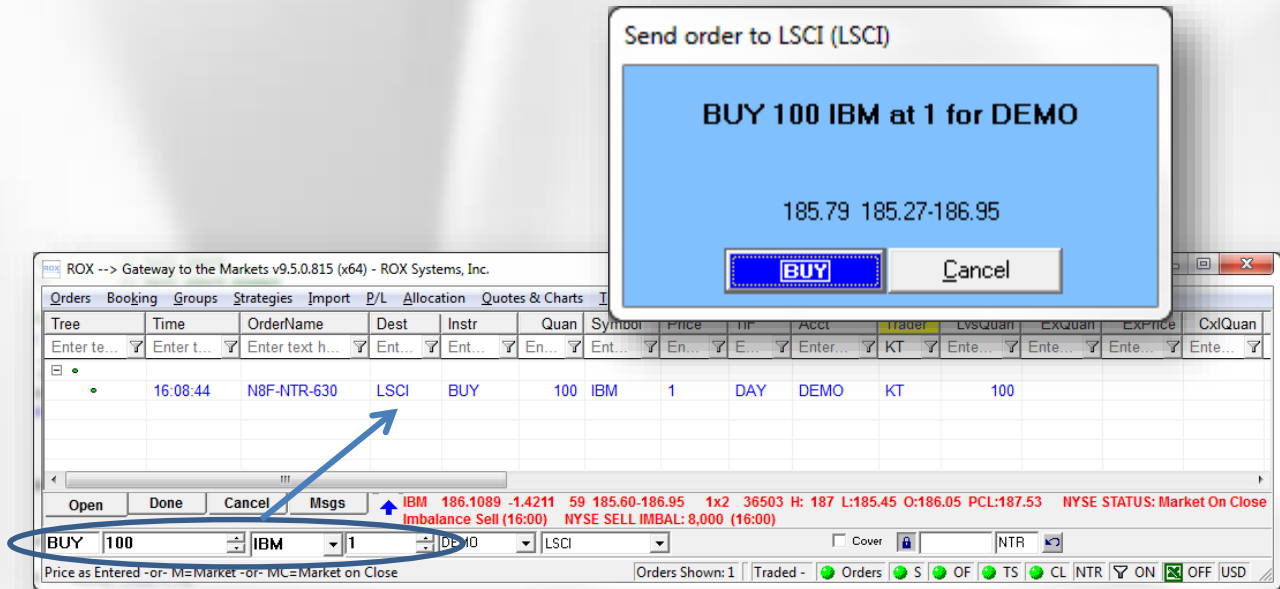


**Step 4: Sending a test order**

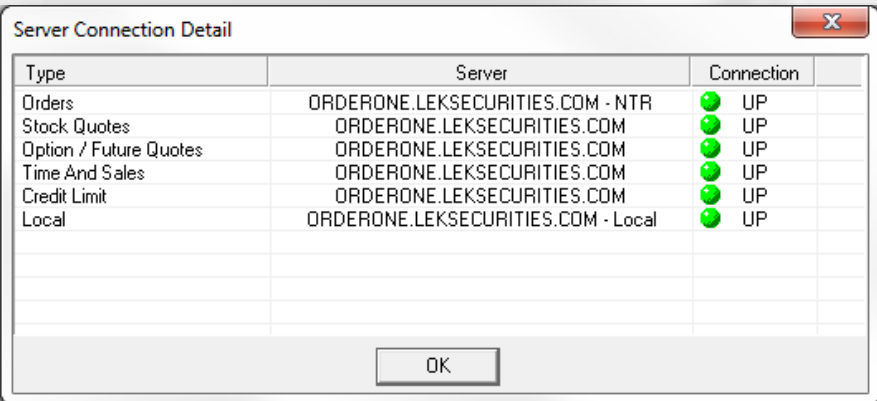
To test your connections, send a **test trade** using the **bottom left pane**

If the trade is successfully sent, it will appear in the middle of the screen

To **cancel**, highlight the trade, right click and select **Cancel Order**



Now that you have configured your Program options, your **Orders** (and **Quotes if enabled**) should be up – this will be indicated by **green** lights



If you would like to see an additional summary of your connections, select **Tools** ... ► **Server Connection Details**

